

500 Series

IntelliTrak

500 Series



IntelliTrak[™]
Material Handling Solutions

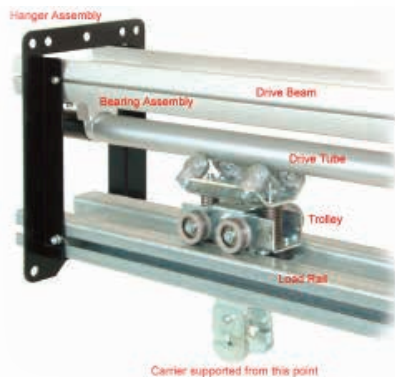
500 Series IntelliTrak

The IntelliTrak 500 Series Overhead Conveyor is the most popular of our Overhead Conveyor family. With a capacity of up to 500 lbs. in single trolley applications and 850 lbs. in dual trolley applications, the 500 Series will meet most light to medium weight Overhead Conveyor needs.

With standard components, the 500 Series Overhead Conveyor is capable of operating in temperatures of up to 200°F. With process equipment configurations, temperatures beyond 450°F are possible.

The 500 Series Overhead Conveyor uses carriers that are moved automatically between different areas using trolleys. The driven sections of the system consist of trolleys that are spring-loaded against the rotating drive tube and are supported by load rail sections.

The trolley assembly consists of the main body and the drive head, which is comprised of four wheels set at skewed angles. As the drive tube rotates, it propels the trolley assemblies forward.



Flow changes are achieved through switches that transfer the trolley from one line to another. Reversing the rotation of the drive tube reverses the direction of the trolley.

Elevation changes can be accomplished with incline and decline sections. In addition, vertical drop lifters (VDL's) can be incorporated for raising and lowering carriers.

In-line speed changes are achieved using drive breaks which allow separate drive tubes attached to the same drive beam to run at different speeds. Different drive tube speeds can be achieved by incorporating a variable frequency drive (VFD) or different ratio gear motors.

A non-driven section is identical to the driven section minus the drive beam/drive tube assembly.



½ HP gear motor drive with motor controller.



Door Assembly Line

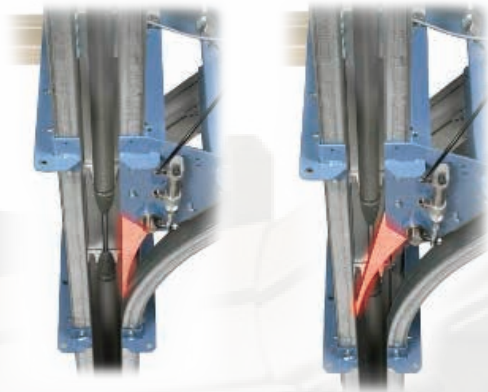


Vertical lifts used for larger elevation changes.



Flexible driven curves with a 19" radius in 15°, 30°, 45° and 90° configurations.

45° Driven Line Switch



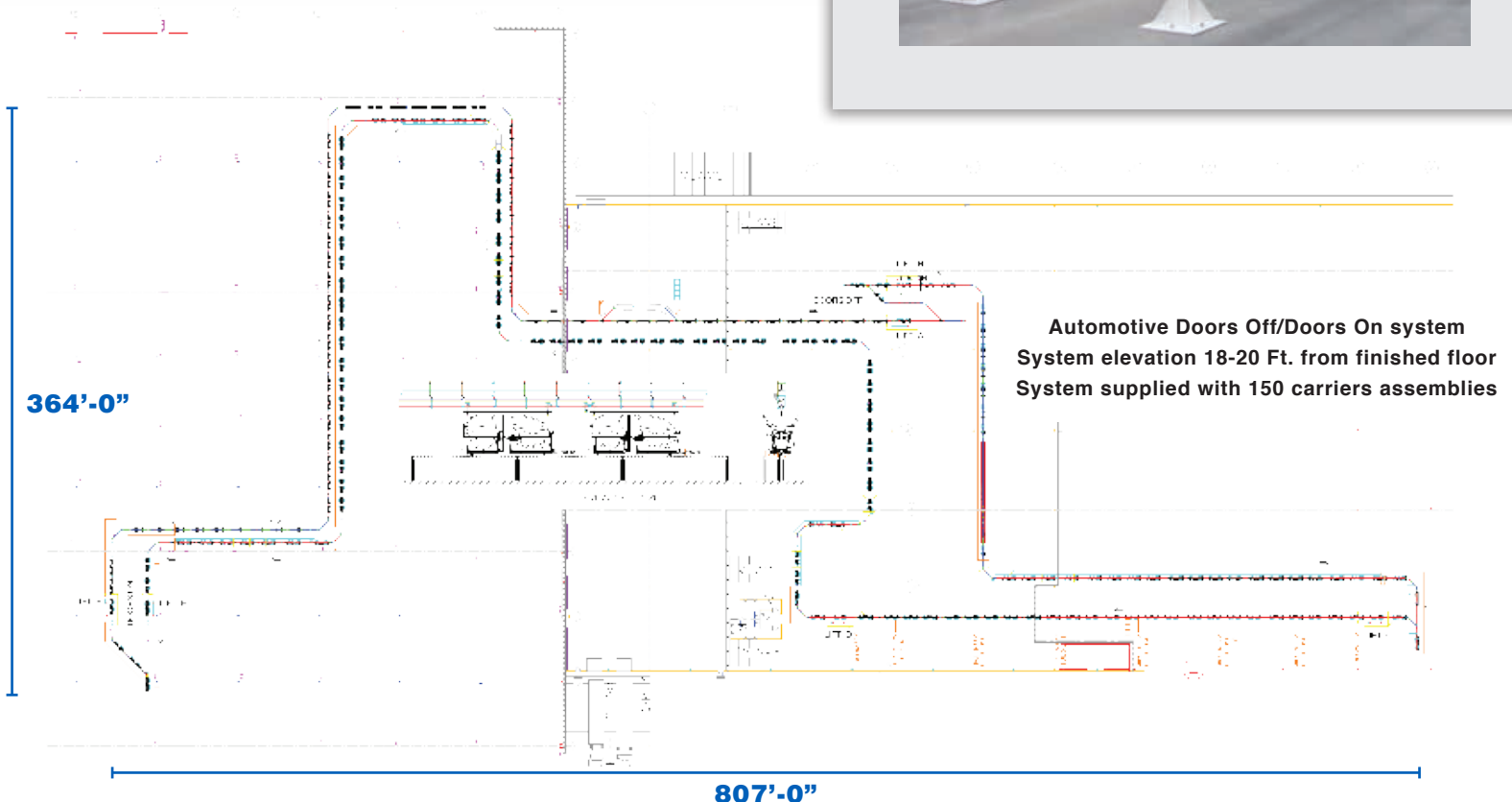
90° Driven Line Switch



Structural Support

Supporting the IntelliTrak 500 Series Overhead Conveyor can be accomplished by mounting directly to the ceiling, using existing overhead structures, or utilizing a network of floor supported steel.

The support steel consists of vertical floor supports with I-beam cross members bolted to the top. Running steel is then suspended from the I-beam network, making up a grid-like network from which hangers, drive beam, and load rails are suspended.



Summary of the Features and Benefits

- 500 lb. Capacity per Trolley
- P&F Capable
- Modular, Bolt Together Construction
- Easily Modifiable and Scalable
- Forward & Reversing Motion
- Inline Speed Changes
- Diverts Left or Right
- Incline/Decline & Vertical Travel
- Quiet, Reliable, No Lubrication Required
- Compact Design Reduces System Floor Space



IntelliTrak™
Material Handling Solutions

8660 Seward Rd. • Fairfield, OH 45011
513.714.4133 • Toll Free: 800.616.9304

Affiliates

IntelliLogic™
Controls Solutions



Automatic Systems, Inc.
Material Handling Systems
www.asi.com

IntelliLift™
Industrial Lifting Solutions